

Model RDPL

Designed for Maximum
Dependability and Service



The RDPL is RDT's Superior Parallel System

Standard Features:

- R-404a—R-22 Medium and Low Temp.
- Heavy Gauge Welded Steel Frame Primed And Painted With 2 Coats Polyurethane
- Receiver With Relief Valve And Liquid Level Indicator
- U.L.-Listed And Labeled Pre-Wired Control Panels Feature A Single Point Electrical Connection, Individually Fused Circuits With Toggle Switches, Definite Purpose Contactors And Breakers
- Oil Separator Assures Adequate Oil Supply Under Varying Load Conditions
- Oil Float and Return System On Dual Uneven And Three Or More Compressor Systems
- Compressors May Be Even Or Uneven Horsepowers, With Satellites; Up To Six Compressors On A Single System
- Head Fans Provided On All Low-Temperature Compressors
- Liquid Line Solenoids
- Evaporator Pressure Regulator
- Stainless Steel Super Hose Connection
- Complete Manifold System Pre-Piped and Mounted With Temperature Control, Electric Solenoid and Service Valve as Needed
- Sentronic Oil Switch
- Large Capacity, Oversize Receiver for Remote Condenser Operation
- Pre-Wired Defrost Panel (Where Electric Defrost is Required)
- Oil Reservoir
- Suction Accumulator to Prevent Flood Back
- Liquid Sight Glass
- Replaceable Core Suction Filter
- Replaceable Core Liquid Filter Drier
- Percentage Liquid Level Indicator For Quick, Accurate Reference of Refrigerant Charge, With an Optional Alarm (Can Be In Communication Package)

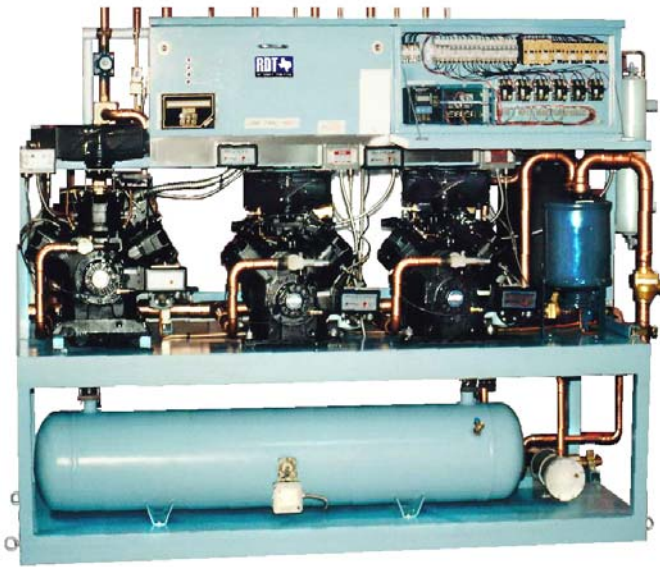
- Diagnostic Centers Sound An Alarm If Any Of The Following Are Detected: Compressor Overload, Low Liquid Refrigerant Level in the Receiver, Low Oil Pressure, or High System Head Pressure. They Can Operate Audible or Visible In-Store Alarms, or Can Automatically Phone a Service Location

Optional Features:

- Remote Air Cooled Condensers, Water Cooled, Evaporator Cooled

NOTE: Dimensions Of Racks Conform To Number Of Compressors. Height Is 72" On Most Applications. Front To Back Dimensions Will Be 40" With 30" Length Required Per Compressor. (Example: A 3-Compressor Rack Would Be 40" X 90" X 72")

Parallel System Allows One Compressor to Run Multiple Evaporator Coils



Compressor Data			60 Hz, 3 Phase	
R-22 Med. Temp. +25°	BTU Rated Figure	Comp. HP	208-230V Amperage	460V Amperage
2DC3-0500	43,300	5.0	22.3	10.4
2DL3-0750	63,800	7.5	31.6	13.8
3DA3A0750	87,500	7.5	41.0	20.0
3DB3A1000	104,000	10.0	43.6	20.0
3DS3A1500	138,000	15.0	59.6	29.0
4DA3-2000	148,000	20.0	66.0	33.0
4DH3-2500	193,000	25.0	82.2	41.1
4DJ3-3000	226,000	30.0	94.0	47.0
6DH3-3500	276,000	35.0	107.0	53.5
6DJ3-4000	335,000	40.0	142.0	71.0

Note: Consult factory for R404a Medium Temp Capacities

Compressor Data			60 Hz, 3 Phase	
R-404a Low Temp. -20°	BTU Rated Figure	Comp. HP	208-230V Amperage	460V Amperage
2DL3-040E	21,800	4.0	26.3	10.2
2DA3-060E	25,200	6.0	28.8	10.2
3DB3A075E	36,200	7.5	31.5	16.1
3DF3A090E	44,200	9.0	39	16.9
3DS3A100E	49,900	10.0	42.0	18.6
4DL3-150E	68,600	15.0	52.6	26.3
4DT3-220E	81,800	22.0	66.0	33.0
6DT3-300E	114,100	30.0	95.6	47.8

Compressor Data			60 Hz, 3 Phase	
R-22 Low Temp. with Demand Cooling -20°	BTU Rated Figure	Comp. HP	208-230V Amperage	460V Amperage
2DF3-0300	15,000	3.0	16.8	8.1
2DA3-0600	21,300	6.0	28.8	10.2
3DB3A0750	26,000	7.5	31.5	16.1
3DS3A1000	42,100	10.0	42.0	18.6
4DL3-1500	58,400	15.0	52.6	26.3
4DT3-2200	69,600	22.0	66.0	33.0
6DT3-3000	104,100	30.0	95.6	47.8

Note: More configurations are available. Please contact the factory directly for the latest information.